



 GALAXY  
**KINGS COURT**

3&4 BHK King Size Luxury Apartment



*Celebrate the dawn of imperial lifestyle*

# UDAIPUR

## The City of Lakes

One of the most beautiful cities of Rajasthan, Udaipur is the land of charming water lakes and enveloped by the Aravalli Hills. It is also one of the most visited tourists cities for it is famously known for stunning lakes, vibrant culture, magnificent palaces and delectable food. The charm of the city resides in its larger than life havelis and monuments. The city was founded in 1559 by Maharana Udai Singh II as the new capital of the Mewar kingdom. The grandeur of the Rajput era is still prevalent in the city's architecture.



# GALAXY KINGS COURT

3&4 BHK King Size Luxury Apartment



## *Kings Court at a Glance*



24 UNITS



WELCOME LOBBY



CENTRAL LOCATION



TEMPLE



LANDSCAPED GARDEN



MODERN GYM



PARTY HALL



INDOOR GAMES



24 HOUR SECURITY



*Where every moment is  
elevated to regal*

One frequently wishes to own a home because they have a mental picture of how they would spend their life in a new home. And for those dreamers, we present to you Galaxy Kings Court, a world of royal luxury that brings your dream into reality. Give your family the life that you envisioned at Kings Court, where they will experience a luxurious lifestyle. The spacious living room, modular kitchen, and cosy bedrooms are among the many things waiting for your arrival.



**GALAXY**  
**KINGS COURT**  
3&4 BHK King Size Luxury Apartment



**GALAXY**  
**KINGS COURT**  
3&4 BHK King Size Luxury Apartment

*A beautiful place for  
royal beginnings*

Standing tall in all its glory, Galaxy Kings Court is the epitome of grandiosity and luxury. The elegant premise is embellished with large balconies that offer its residents a stunning view and catch the attention of onlookers. Located in the heart of the city, Galaxy Kings Court offers you great connectivity to places where all your daily requirements are fulfilled. The thoughtfully designed, spacious 2 and 3 BHK apartments provide ventilation and natural lighting to your room, which fills your home with serenity.



*Something for your  
peace of mind*

The beautiful landscaped garden, temple, and children's play area are all designed to provide activities for people of all ages. Enjoy the simplicity of strolling barefoot in the garden and breathing the fresh air while your kids are busy with their play. Feel a sense of calm as you perform the evening aarti in the temple. Socialize with your fellow residents in the landscaped garden and loosen those tired knots after a hectic day.



Children's Play Area



Indoor Games



Gym



Society Office



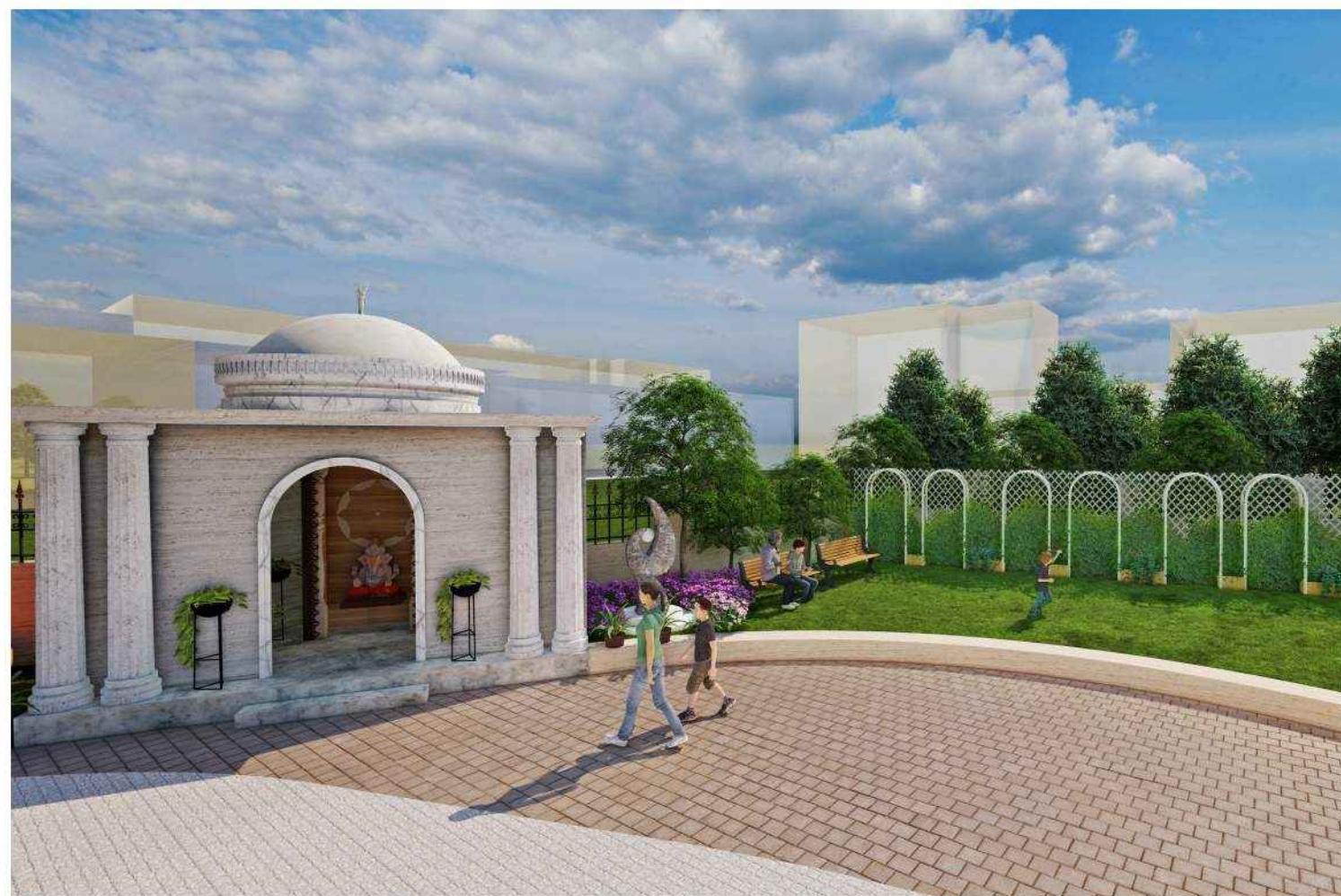
Banquet Hall



Landscaped Garden



Entrance Lobby



Temple and Landscape Garden

*Live everyday as iconic as you are*



*A lifestyle that stands apart*

The flats at Galaxy Kings Court are the finest luxury living spaces that are sophisticated and elegant in design. The architectural beauty of Kings Court is inspiring in both appearance and function and radiates modern charm. Now enjoy life's most precious moments with your family in the state-of-the-art luxury apartments that are not only a status symbol but the right choice for investment.





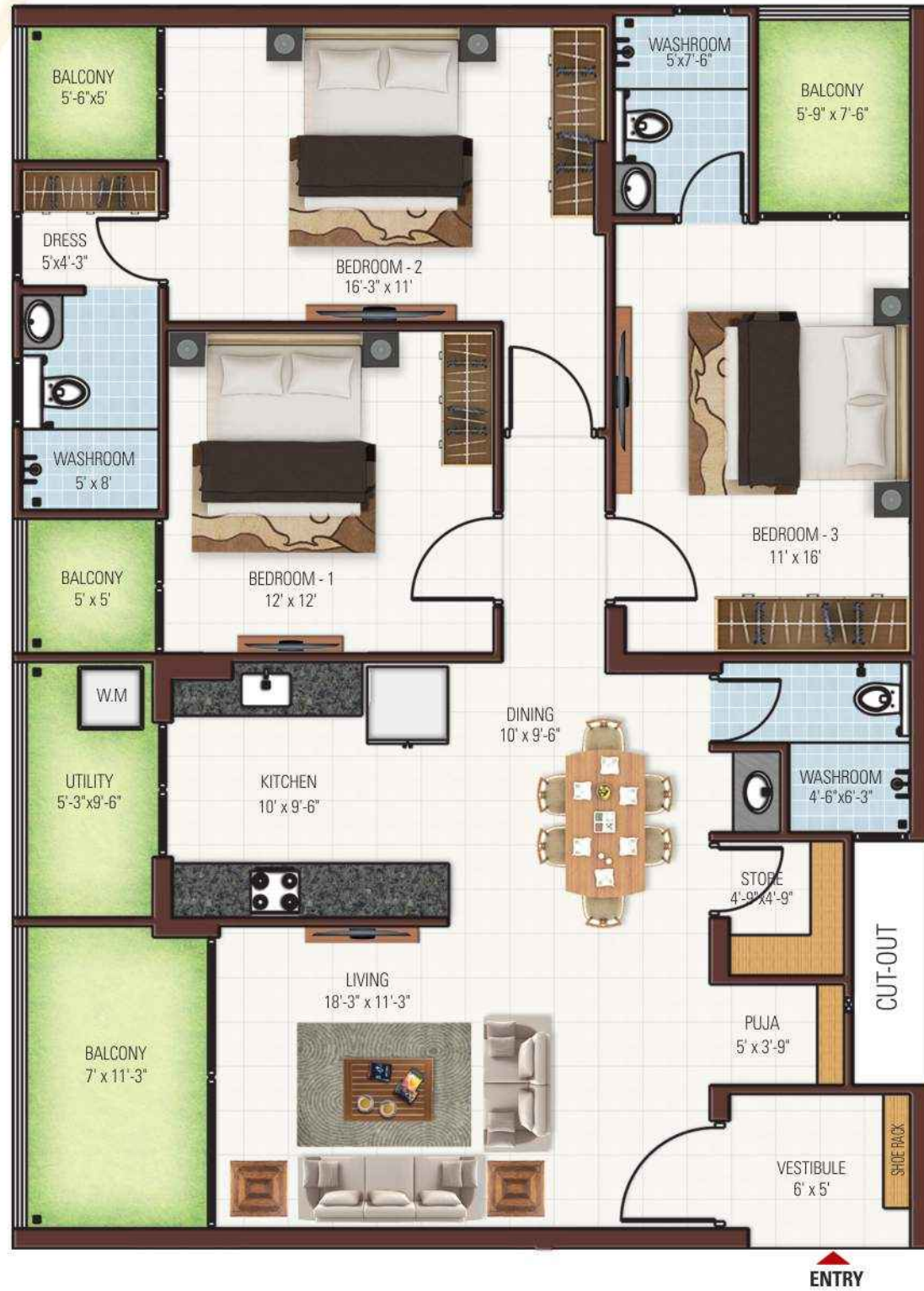
Flat No : G001, 101, 201, 301, 401, 501  
 Type : 4 BHK Super Deluxe  
 Carpet Area : 1790 + 260 (Balcony + Utility)  
 Built Up Area : 2235 Sq. ft.  
 Super Built up Area : 3310 Sq. ft.



Flat No : G002, 102, 202, 302, 402, 502  
 Type : 4 BHK Deluxe  
 Carpet Area : 1656 + 254 (Balcony + Utility)  
 Built Up Area : 2060 Sq. ft.  
 Super Built up Area : 3050 Sq. ft.







Flat No : G003, 103, 203, 303, 403, 503  
 Type : 3 BHK Super Deluxe  
 Carpet Area : 1217 + 202 (Balcony + Utility)  
 Built Up Area : 1540 Sq. ft.  
 Super Built up Area : 2280 Sq. ft.



Flat No : G004, 104, 204, 304, 404, 504  
 Type : 3 BHK Super Deluxe  
 Carpet Area : 1217 + 202 (Balcony + Utility)  
 Built Up Area : 1540 Sq. ft.  
 Super Built up Area : 2280 Sq. ft.



## Specifications

### APARTMENT

- All Apartment open on more than 2 side, assuring air ventilation & sunlight.
- Ultra Modern Landscape.
- Earthquake resistant building.
- Vastu treatment in plot.

### LIFE STYLE SERVICES

- Grand entrance lobby with sofa seating.
- Mini Gym and Fitness Center
- Yoga area
- 1500 Sq. ft. Landscaped Garden.
- Temple.
- Children Play Area.
- Party Hall / Indoor Games Room .(T.T. Table, Carom)
- Society Office.
- Designer Lift Lobby.
- Waiting Area at Stilt Floor.
- Central Location Advantages.

### COMMUNITY LIVING

- Secure & Dedicated Parking for Residents.

- Ample Parking for Visitors.
- Gated Community.

### SECURITY

- 24 Hrs. live CCTV recording.
- CCTV campus surveillance on each floor & entry-exit gates.
- Intercom Facility from main gate to all apartment.
- Fire fighting System.

### INTERIOR

- Different combinations of vitrified tiles flooring.
- Internal walls finished with putty / super sandla.
- Sliding aluminum window sections.
- Quality frames and laminated flush doors.

### TOILETS

- Anti skid ceramic tiles.
- Concealed Plumbing with latest equipments
- High end bath fittings & sanitary wares.

### KITCHEN

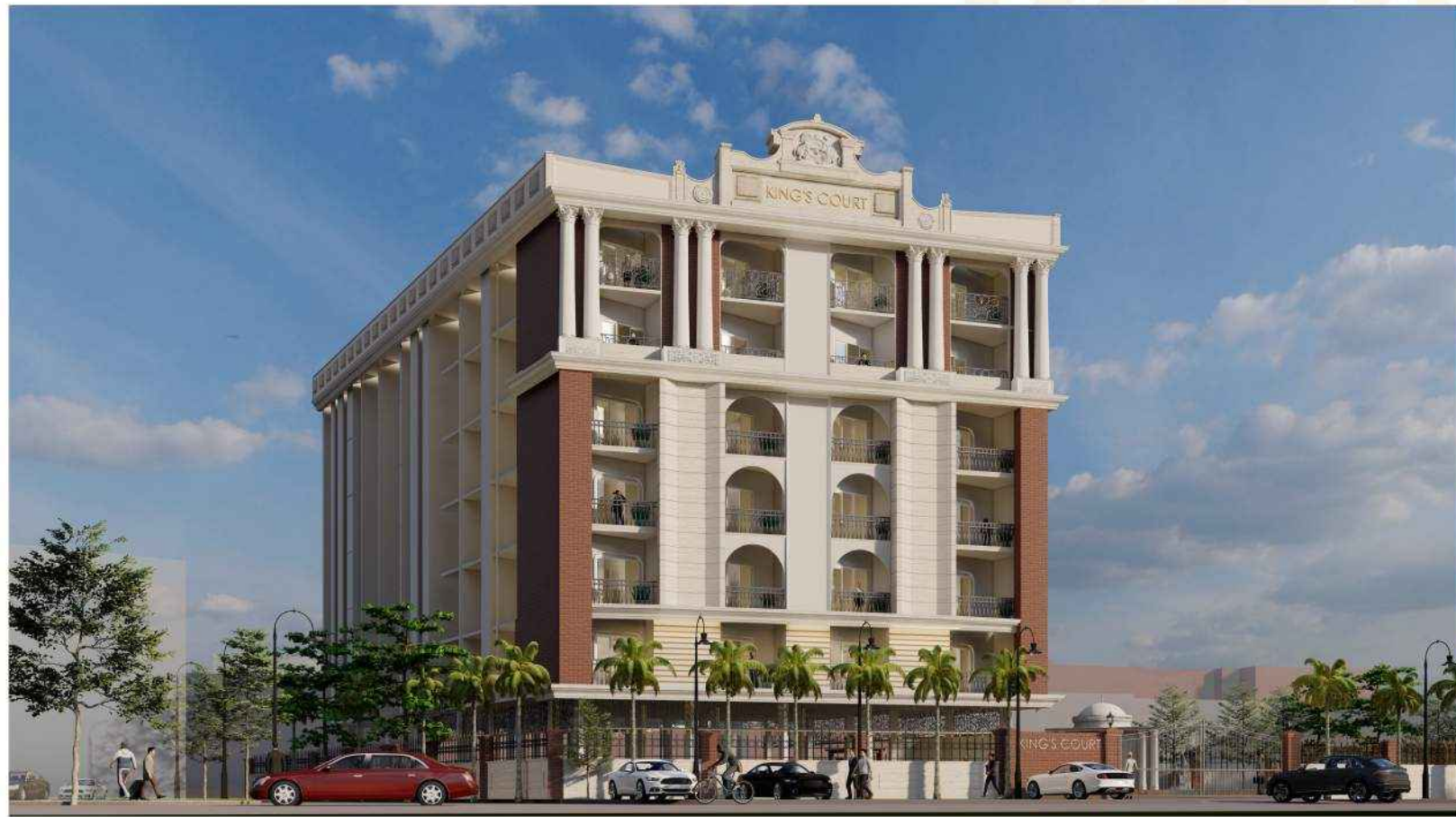
- Store room & separate wash area.
- Granite platform with stainless steel sink.
- Vitrified tiles flooring.

### ELECTRICAL

- Concealed fire resistant copper wiring.
- Premium quality modular switches.
- Telephone / Cable T.V. wiring.
- A.C. points in all rooms

### OTHERS

- 24 Hour power back-up in common areas.
- Rain - water harvesting adopted.
- High speed elevators.
- Separate toilet for driver & guards.
- Separate entry for domestic help/ milkman/ courier etc.
- Guard room at entry.
- Water softner plant
- E.V. charging point



## About Group

GALAXY ESTATES has established itself as a trusted name in the construction sector of Udaipur. we believe in delivering quality construction in record time. Our Motto is that our apartments create new benchmarks in design quality and lifestyle for its residents. We work hard to put smile on faces of our clients .



Galaxy Enclave



Galaxy Emerald



Galaxy Emerald Lobby



Galaxy Residency Villas



# GALAXY KINGS COURT

3 & 4 BHK King Size Luxury Apartment

**Site Address :**

Plot no. : 1, KH.No : 657,658/1, 1380/658,  
Opp. Srajan Apartment, Shobhagpura,  
Udaipur (Raj.) 313 004



Location Map | not to scale



Project developed by:

**Galaxy Estates**

Ankit Jain

Cell: 9887056669

Mail: ankit@galaxyinfra.in

Architects  
**Priyanka Arjun & Associates**

Structural Consultant  
**B.P. Joshi**

Plumbing & Electrical Consultants  
**Rakesh Bhati**

Disclaimer: The visual representation shown in this brochure are purely conceptual and for reference only and does not resemble any building structure and shall have no bearing, in any manner of booking made in this project and the developer reserve all rights, in this regard. This brochure is not a legal document.